

Boats-Yachts.net

International Yachtbrokerage

The Owner's Website

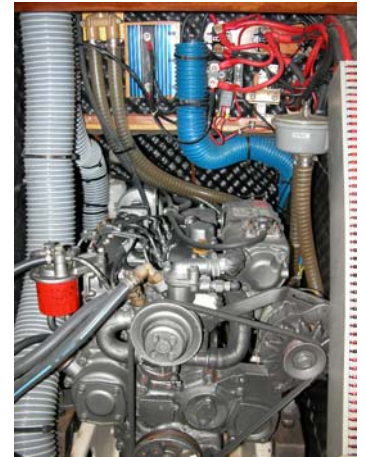
Maria Louise of Temple



Year	1998	LOA	41ft 8 inch/12.7m
Builder	Beneteau	LOD	
Designer	Group Finot	LWL	36ft. i inch/11m
Type/Class	Oceanis 411	Beam	13ft/3.96m
Hull Material	GRP	Draft	5ft. 7inch/1.70m
Displacement	8.5 Tons	Ballast	
Deck Material	GRP	Fuel Tank	39Gals. US./156Litres
Keel type	Fin	Water Tank	151Gals. US./604Litres
Rig type	Sloop	Holding Tank	2 X 12gals. US/48Litres
Engine	Yanmar 4JH	Accommodation	6 in three cabins
HP	51	Guest Cabins	N/A
Speed	7 knots	Crew's Quarters	
EU VAT	No	Air conditioning	No
Flag	British (Part 1 Reg.)	Lying	Marmaris, TR

Machinery

Main Engine	Yanmar
Model/cyl/year/HP	4JH - 51
Fuel Consumption	
Engine Hours	
Speed	7 Knots
Range	200 Miles
Steering	Wheel
Gear Box	Mechanical
Wind Vane	No
Fresh water pump	Yes
Toilet system	Two(2) heads - Manual
Air heating system	No
Hot Water system	Yes



Electrical System

Voltage	12Volt
Batteries	Three(3)
Charger	Yes
Generator	No
Inverter	No
Wind Generator	No
Solar panels	Yes
Shore power cable	Yes

..



Navigation Equipment

Compass	Olympic 135
Radar	No
Echo-sounder (depth)	B & G
Log/Speed meter	B & G
Autopilot	B & G
GPS	Raymarine Chart Plotter - C70
VHF Radio	Apelco VXE 75
SSB Radio/HAM	No
Wind Instrument	B & G
Navtex	Target Navtex Pro Plus



The Gourmet Galley is beautifully appointed with Cabinets, pressure laminated Counter Tops, Large double Stainless steel Sinks and loads of Storage

Galley

Stove & Oven	Eno 2 burner gas cooker with oven
Refrigerator	12 volt Frigabot top-load Refrigerator/Freezer
Gas System	Dual Gas Bottles

Ground Tackle

Anchor(s)	60lb CQR - new
Chain	10mm galvanized chain
Windlass	Lofrans Tigres



Equipment

Dinghy	Avon
Outboard engine	Yamaha 2.5HP
Radio / Cassette player	Blaupunkt
TV/Video	No
Fenders	Six
Davits	No
Sun Awnings	Yes
Cockpit cushions	
Bimini	Yes
Spray Dodger	Yes
Swimming-Ladder	Yes
Swimming Platform	Yes
Passerelle (Gang way)	Yes



Rigging

Masts & Spars	ZSpar, in mast furling
Sails	Furling Genoa & Mainsail
Genoa Furling	Bamar 2006
Winches	Lewmar

Safety Equipment

Life Raft	Yes
Life Jackets	Yes
Life Buoys	
Fire Extinguisher	Yes
Auto fire system	No
Gas Alarm	Yes
Bilge Pumps	Yes Manual & Electric



3 Cabin Layout

Accommodation

Cabins	3
Owner's Cabin	Large Double, Seat, Hanging Locker etc.
Saloon	
Bathroom	2
Crews cabin	No
Headroom	



History & Condition:

A chance to purchase a private owned yacht reported never to have been chartered.

Excellent condition, new paint, furling genoa & main sail, Dodger & Bimini, solar panel, Yanmar auxiliary and more.

"Maria Louise of Temple" is a 3 cabin version. Forward, in the Bow area, is a large Head with Shower accessed thru the forward Pullman Cabin. The Forward Pullman Cabin has a double Berth to Stbd, with Storage Drawers below. The Port side of the Cabin has a Settee, Hanging Locker and Storage Cabinet. The large Salon is amidships with a Full Galley to Port and to Stbd is the U-shaped Dinette with convertible Dining Table and removable Centerline Settee Seat. There are several Teak Storage Cabinets throughout the Salon. To Port, aft of the Galley, is the Second Head with removable Shower Faucet, Mirrored Storage Cabinet and Opening Port Window with Deck Hatch above. Aft of the Dinette is the Nav Station. The Stern has two Aft Cabins that are each large enough for two adults and their gear.

Asking Price:- £65,000 Sterling

Whilst every care has been taken in their preparation, the correctness of these particulars is not guaranteed. The particulars are intended only as a guide and they do not constitute a term of any contract. A prospective buyer is strongly advised to check the particulars and where appropriate at his own expense to employ a qualified Marine Surveyor to carry out a survey and/or to have an engine trial conducted which if conducted by us shall not imply an liability for such engine on our part.

Comments: -

Viewing highly recommended.

Lying: - Marmaris

Contact listing@boats-yachts.net for further information or appointment to view.